



Terms & Conditions For Kite Surfing in Poole Harbour

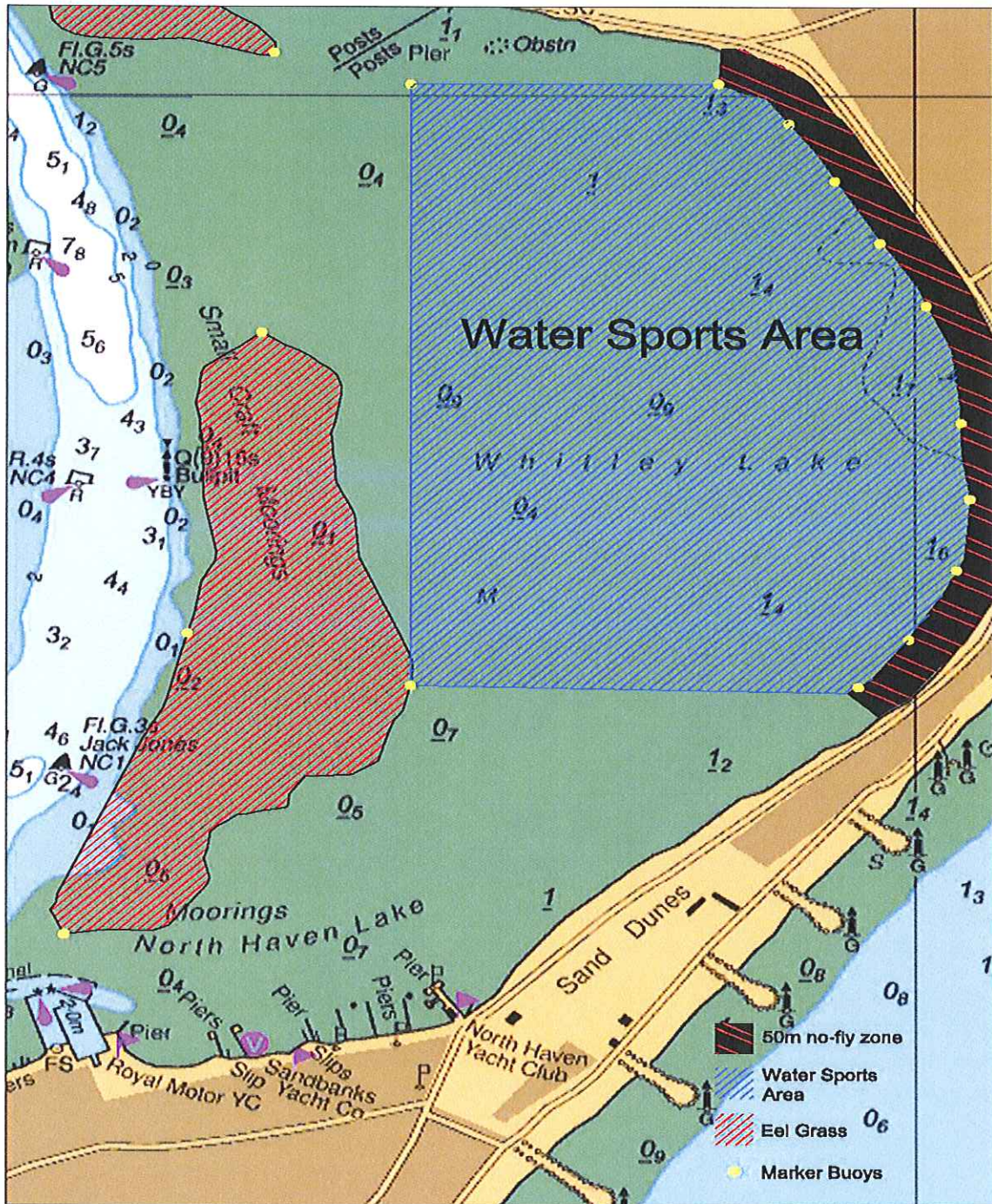
1. Kite Surfers must have a valid permit to Kite Surf in Poole Harbour which must be prominently displayed and presented to any employee of Poole Harbour Commissioners upon request.
2. Kite Surfing in Poole Harbour must be covered by insurance to cover third party risks as a minimum.
3. Kite Surfers must have the competence to self-rescue and full pack down in deep water. Unless they are under training by a BKSA registered training school.
4. Kite Surfers will not allow any person to use their Kite Surf equipment unless that person has a valid permit to Kite Surf in Poole Harbour.
5. Kite Surfing is not permitted in the Harbour entrance or the main channels between the Bar buoy and the Turning Basin.
6. Kite Surfing is not permitted south of an imaginary line running between South Haven Point and Shipstal Point.
7. Kite Surfing in areas where there are swinging moorings shall be avoided.
8. Kite Surfing, launching or landing is not permitted between the shore and the 50m buoyed exclusion zone at Whitley Lake.
9. The preferred area for Kite Surfing is shown on the attached chartlet. The areas marked eelgrass beds should be avoided.
10. If lifeguards have deployed black and white chequered flags indicating a launch/recovery lane, then this shall be used. Kite Surfers must stay well clear of swim only zones.
11. Kite Surfers should be aware that other activities take place throughout the Harbour and that no area is designated for Kite Surfing only.
12. Kite Surfing is only permitted from sunrise to sunset.
13. No jumping or railing equipment is permitted in Poole Harbour.
14. Transgression of these Terms and Conditions may result in the withdrawal of the permit without refund.

These terms and conditions shall apply in all parts of the Harbour, as defined by article 4 of the 2012 Order ("the Harbour"). This includes seaward of the Harbour entrance and along the Sandbanks Peninsular.

Offences may lead to prosecution under Poole Harbour General Directions for which the maximum fine is £2,500 plus costs. Copies of the relevant General Directions are available from the PHC Website or Harbour Office.



PREFERRED KITE SURFING AREA IN POOLE HARBOUR



Mariners are reminded that Radar, AIS, CCTV, telephone and VHF channels are recorded.

Captain B P Murphy
Harbour Master